



CONCRETE CONTROLS CORPORATION
1311 N. CONGRESS DRIVE
CHANDLER AZ 85226-1445
1-800-345-6654 FAX 1-480-821-1138

INSTALLATION INSTRUCTIONS

CONCRETE TEMPERATURE CONTROL

A. Choose a location for the instrument which is within reach and view of the batch operator.

B. Install the water blending valve as close as possible to the water measuring (metering) device. See Valve manual for specific instructions.

C. Install the averaging RTD probes per the attached sheet.

D. Drill & tap or use reducers in a "TEE" to install the pipe to compression fitting **5'** downstream of the blending valve or closer in an elbow. For best results the water should flow down the length of the probe from connector to tip and not across the probe. (see figure #1)

E. Install the thermocouple in the center of the pipe. Note: the thermocouple only reads the temperature on the tip. (see figure #1)

F. Route the 3 (three) cables to the various devices:

1. Blue & Red thermocouple wire to the thermocouple in the water line. (NOTE: THIS CABLE MUST BE RUN AWAY FROM ANY HIGH CURRENT A.C. POWER CABLES)

2. White 3-wire RTD cables to the junction boxes near the gates of the overhead bins. Terminate the 3 wire cables by matching colors.

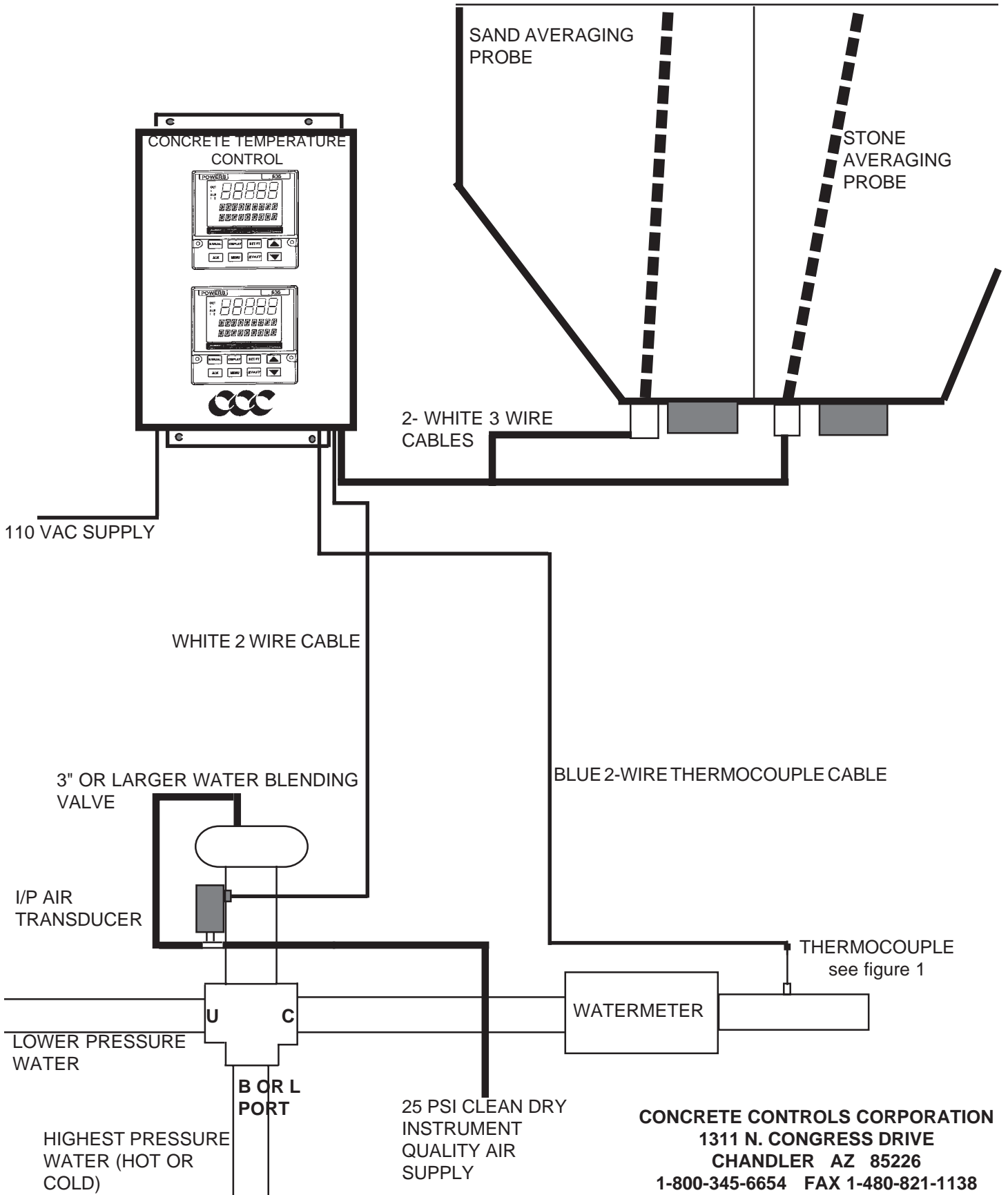
3. Small White 2 wire control cable to the air transducer. Terminate the cable at the transducer. Black wire + (pos) to the transducer BLACK. White wire - (neg) to the transducer WHITE.

POWER UP CONTROL. THE TWO INSTRUMENTS NEED TO BE IN AUTO, NOT MANUAL (MANUAL BUTTONS NOT LIT) AND THE LOWER (WATER) INSTRUMENT SHOULD HAVE A DISPLAY ON THE SECOND LINE "RSP" FOR REMOTE SETPOINT. IF NOT PRESS THE SET PT. BUTTON.

PRESS SET PT. REPEATEDLY FOR UP TO EIGHT MANUALLY SET WATER OR CONCRETE TEMPERATURES.

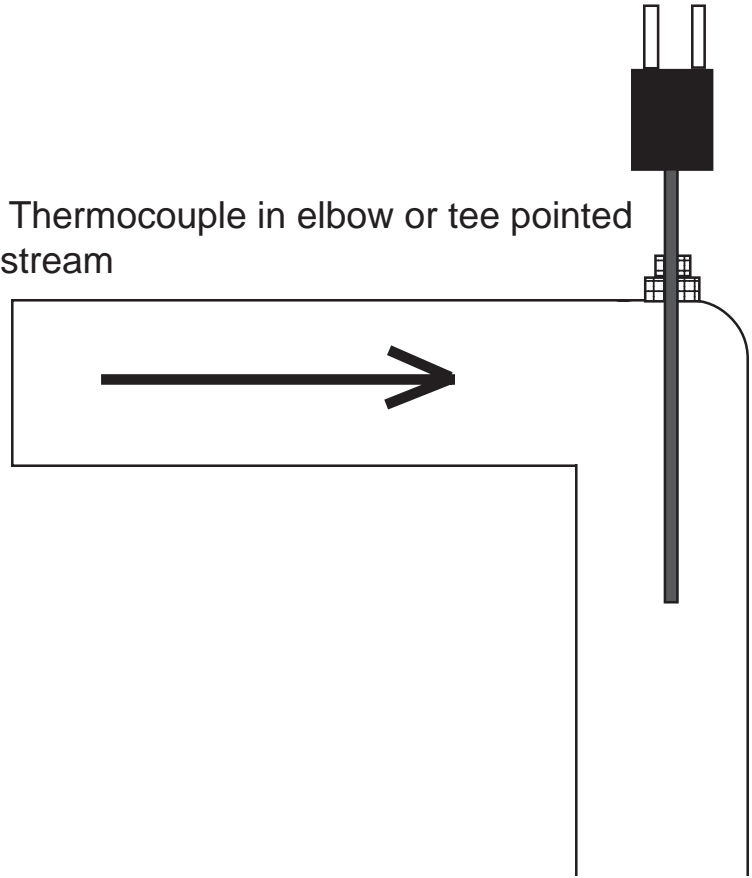
FURTHER INSTRUCTIONS ARE AVAILABLE IN THE INSTRUMENT MANUAL OR CALL 1-800-345-6654.

CONCRETE TEMPERATURE CONTROL SYSTEM INSTALLATION

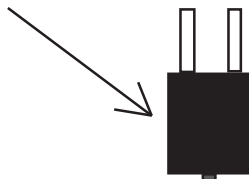


CONCRETE CONTROLS CORPORATION
 1311 N. CONGRESS DRIVE
 CHANDLER AZ 85226
 1-800-345-6654 FAX 1-480-821-1138

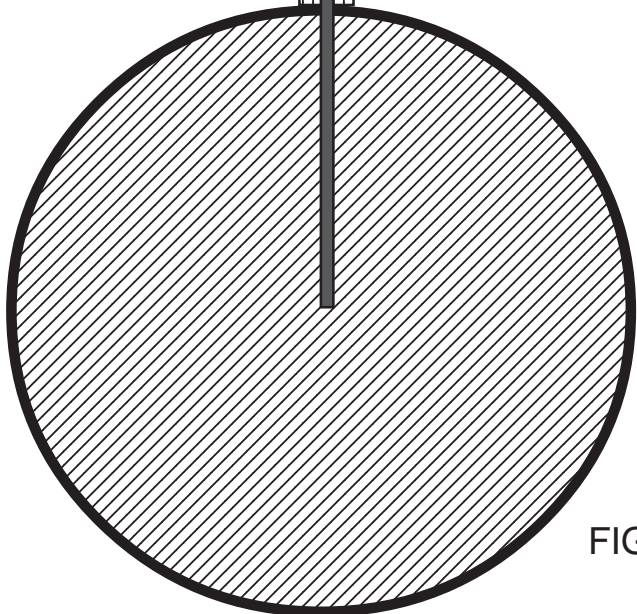
Install Thermocouple in elbow or tee pointed
down stream



THERMOCOUPLE



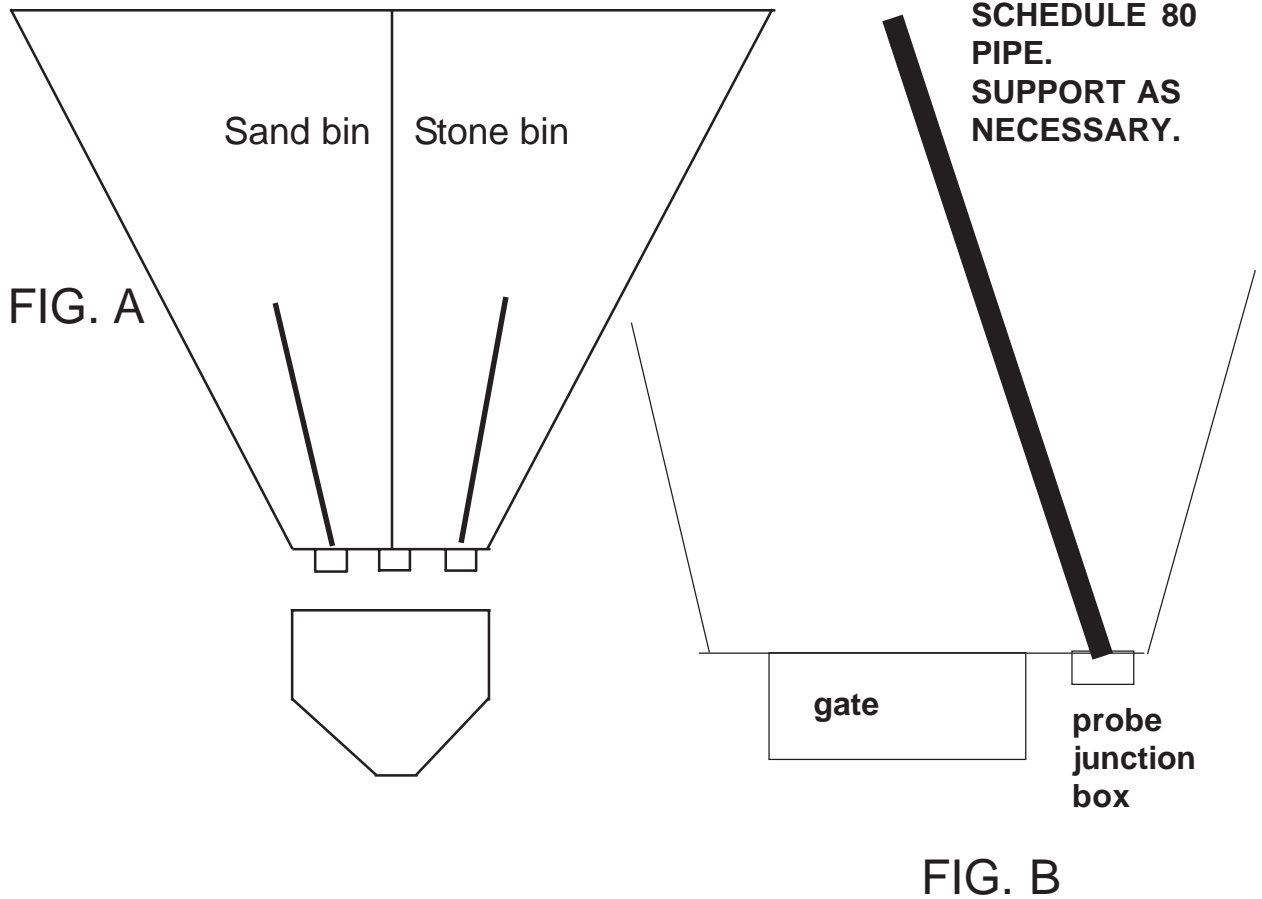
COMPRESSION FITTING



PIPE CROSS-SECTION

FIGURE 1

AVERAGING RTD PROBE INSTALLATION



Location Considerations:

The averaging RTD probes are designed to sense the **average** temperature of sand, stone and any other aggregate. The overhead bins are the best location for this. The probes should be installed vertically over the sand and stone gates in order to sense the true average temperature of the next batch of material.

Installation:

Overhead Bin- (see fig. A)

1. Empty the storage bins you wish to average.
2. Weld a capped 1" OR 3/4" schedule 80 pipe of sufficient length next to the sand discharge gate. (see Fig. B)
3. Support the free end of the pipe
4. Drill or cut a hole from the gate area into the pipe cavity.
5. Insert the probe up into the pipe and attach the junction box flange to the bin.
6. Connect the cable supplied with the control to the probes.



CONCRETE CONTROLS CORPORATION
1311 N. CONGRESS DRIVE
CHANDLER ARIZONA 85226
1-800-345-6654 FAX 1-480-821-1138